



Respiratory Disposables

Respiratory Patient Care
International Catalogue 2009



Contents

Oxygen Therapy

Face Masks

AirLife® Medium-Concentration Oxygen Masks	6
AirLife® High-Concentration Oxygen Masks	7
AirLife® Venturi-Style Masks	8
AirLife® Dual Dial™ Venturi-Style Masks.	10

Cannulas

AirLife® Adult Standard Nasal Cannulas	11
AirLife® Cushion Nasal Cannulas	11
AirLife® Adult Demand Cannulas	12

Tubing

AirLife® Crush Resistant Oxygen Supply Tubing	13
---	----

Accessories

AirLife® Oxygen Tubing Connector	14
AirLife® Universal Oxygen Nut/Nipple Connector	14
AirLife® Oxygen Catheters.	15

Aerosol Therapy

Face Masks

AirLife® Aerosol Masks	16
AirLife® Face Tent Mask	17
AirLife® Tracheostomy Mask.	17

Nebulizers

AirLife® Misty-Neb™ Medication Nebulizers.	18
AirLife® Misty Max 10™ Disposable Nebulizers	19
AirLife® Misty Max 10™ Disposable Nebulizers (Cont).	20
AirLife® Misty Finity® Continuous Nebulizers.	21
AirLife® Misty Finity® Continuous Nebulizers (Cont)	22
AirLife® Empty Nebulizers and Heaters	23

IPPB (Intermittent Positive Pressure Breathing)

AirLife® IPPB Manifolds	24
-----------------------------------	----

Accessories

AirLife® Corrugated Tubing	25
AirLife® Aerosol Drainage Bags With “Y” Adapter	26
AirLife® Aerosol “Blow-By” Circuit	26
AirLife® Universal Mouthpiece.	27

Lung Exercisers/Incentive Spirometers	
AirLife® Volumetric Incentive Spirometers28
AirLife® Airx™ Flow Incentive Spirometer28

Humidifiers, Sterile Water and Feed Sets

Humidifiers	
AirLife® Prefilled Humidifier Systems.29
AirLife® Empty Humidifiers30

Sterile Water	
AirLife® Solutions In Flexible Containers31

Feed Sets	
AirLife® Feed Sets For Use With Solution Bags.31

Heated Breathing Circuits

Adult	
Dual-Heated Circuits32
Single-Heated Circuits.33
Portable Single-Heated Circuits34

Pediatric	
Dual-Heated Circuits35
Single-Heated Circuit36
Portable Single-Heated Circuits36

Infant	
Dual-Heated Circuits37
Single-Heated Circuit38

Non-Heated Breathing Circuits

Adult	
Dual-Limb Circuits.39
Single-Limb Portable Circuit.40

Pediatric	
Dual-Limb Circuit41
Portable Circuits.41

Infant	
Dual-Limb Circuit42

IPPB (Intermittent Positive Pressure Breathing)	
AirLife® IPPB Manifolds43

Breathing Circuit Accessories

Connectors and Adapters

<i>AirLife</i> ® Tee Adapters44
<i>AirLife</i> ™ Valved Tee™ Adapters45
<i>AirLife</i> ® Adult Y Connector With Elbow46
<i>AirLife</i> ® Omni-Flex™ Connectors46
<i>AirLife</i> ® Ventilator Elbows With Suction Port47
<i>AirLife</i> ® U/Adapt-It™ Exhalation Manifold Body47
<i>AirLife</i> ® Disposable Water Traps48
<i>AirLife</i> ® Disposable Thermometers48
<i>AirLife</i> ® Ventilator Monitoring Adapter Circuit.49
<i>AirLife</i> ® Large One-Way Valve49
<i>AirLife</i> ® Metered Dose Inhaler Delivery Systems50

HME/HMEF and Filters

HME/HMEF

<i>AirLife</i> ® Hygroscopic Condenser Humidifiers.51
<i>AirLife</i> ® Hygroscopic Condenser Humidifier Specifications52

Filters

<i>AirLife</i> ® Nonconductive Bacterial/Viral-Retentive Filter53
<i>AirLife</i> ® HEPA Filter54
<i>AirLife</i> ® High-Efficiency Respiratory Filter With Diffuser55

Resuscitation Bags and Devices

Resuscitation Bags

<i>AirLife</i> ® Disposable Resuscitation Bags56
--	-----

Resuscitation Devices & Accessories

<i>AirLife</i> ® Mouth-To-Mask Resuscitators.57
---	-----

Suction Catheters and Kits

Suction Catheters

<i>AirLife</i> ® Colour Coded Single Catheters58
--	-----

Suction Catheter Kits

<i>AirLife</i> ® Colour Coded Suction Kits In Peel Pouch59
<i>AirLife</i> ® Colour Coded Economy Suction Kits60

Tracheostomy Care Kits

Tracheostomy Care Kits

Tracheostomy Care Kit61
Complete Tracheostomy Cleaning Tray62

Oxygen Therapy

Face Masks



Adult under-the-chin-style mask 001200



Pediatric under-the-chin-style mask 001262



Pediatric short-style mask 001260

AirLife® Medium-Concentration Oxygen Masks

AirLife® disposable oxygen masks are latex-free and made from soft, high-grade vinyl resins. The smooth, feathered edges are designed for patient comfort while reducing irritation points. AirLife® oxygen masks are designed for anatomical compatibility. **50 masks per case.**

Cat. No.	Description
Adult Vinyl Oxygen Masks (Under-The-Chin Style)	
001200	Mask only
001201	With 2.1m crush-resistant tubing
Pediatric Vinyl Oxygen Mask (Under-The-Chin Style)	
001262	With 2.1m crush-resistant tubing
Pediatric Vinyl Oxygen Mask (Short Style)	
001260	With 2.1m crush-resistant tubing

Oxygen Therapy



Pediatric rebreather mask 001267

AirLife® High-Concentration Oxygen Masks

AirLife® disposable oxygen masks are made from soft, high-grade vinyl resins. The smooth, feathered edges are designed for patient comfort while reducing irritation points. The masks are designed for anatomical compatibility.

3-in-1 masks are packaged as high-concentration, nonrebreathing masks complete with reservoir bags and one-way valves. **50 masks per case.**

Cat. No.	Description
Adult Rebreather Masks (Under-The-Chin Style)	
001205	With 2.1m crush-resistant tubing
Pediatric Rebreather Masks (Under-The-Chin Style)	
001267	With 2.1m crush-resistant tubing
Pediatric Rebreather Masks (Short Style)	
001265	With 2.1m crush-resistant tubing
Adult Non-Rebreather Masks (Under-The-Chin Style)	
001202	3-in-1 mask with safety vent
001203	3-in-1 mask with safety vent and 2.1m crush-resistant tubing
001210	3-in-1 mask with 2.1m crush-resistant tubing
Pediatric Non-Rebreather Masks (Under-The-Chin Style)	
001268	3-in-1 mask with safety vent and 2.1m crush-resistant tubing

Oxygen Therapy



Venturi-style mask 001240

AirLife® Venturi-Style Masks

We offer a wide selection of standard Venturi-style masks that feature six diluter jets ranging from 24% to 50% FIO₂. The masks are available with various oxygen diluters to accommodate pediatric or adult patients. All masks are under-the-chin style and are supplied with 15cm flextube, humidification hood and 2.1m oxygen tubing. We also offer a Venturi-style mask with a tracheostomy mask. **50 masks per case.**

Flow Rate Performance					
Percent Concentration	Color Code	Low Flow O ₂ Settings (L/min.)	Total Gas Delivered At Low Flow Settings (L/min.)	High Flow O ₂ Settings (L/min.)	Total Gas Delivered At High Flow Settings (L/min.)
24%	Blue	2	53	4	105
28%	Yellow	4	45	6	68
31%	White	6	47	8	63
35%	Green	8	45	10	56
40%	Pink	8	33	12	50
50%	Orange			12	32

Cat. No.	Description
Diluter Jet Venturi-Style Masks with crush-resistant oxygen tubing	
001240	Adult, with 15cm flextube, 6 diluter jets (24%, 28%, 31%, 35%, 40% and 50% oxygen concentrations), humidification hood and 2.1m oxygen tubing
001248	Adult, tracheostomy, with 15cm flextube, 6 diluter jets (24%, 28%, 31%, 35%, 40% and 50% oxygen concentrations), humidification hood and 2.1m oxygen tubing
001241	Adult, with 15cm flextube, humidification hood, 2.1m oxygen tubing and 24% diluter jet
001242	Adult, with 15cm flextube, humidification hood, 2.1m oxygen tubing and 28% diluter jet

Oxygen Therapy

001244	Adult, with 15cm flextube, humidification hood, 2.1m oxygen tubing and 35% diluter jet
001245	Adult, with 15cm flextube, humidification hood, 2.1m oxygen tubing and 40% diluter jet
001250	Pediatric, with flextube, 6 diluter jets (24%, 28%, 31%, 35%, 40% and 50% oxygen concentrations), humidification hood and 2.1m oxygen tubing
Trach Tee	
001247	With 15cm flextube, 6 diluter jets (24%, 28%, 31%, 35%, 40% and 50% oxygen concentrations), humidification hood, 2.1m oxygen tubing

Oxygen Therapy



Dual Dial™ Venturi-style mask 001259

AirLife® Dual Dial™ Venturi-Style Masks

Utilizing two oxygen concentration dials, our Venturi-style masks deliver nine specific oxygen concentrations ranging from 24% to 55% O₂. They accommodate pediatric and adult patients. Each mask comes complete with 2.1m of crush-resistant oxygen tubing, 15cm flextube, color-coded low and medium concentration dials, a high-humidity adapter and a humidification hood. For use with 50 psi oxygen source and flowmeter.

50 masks per case.

Cat. No.	Description
001255	Adult
001259	Pediatric

Oxygen Therapy

Cannulas



Cannulas top 001320, bottom 001325

AirLife® Adult Standard Nasal Cannulas

The AirLife® cannulas offer an angulated, flexible lip plate, which provides comfort at the tip of the nasal region, with beveled tips to provide a softer edge. Disposable cannulas are curved and are available with flared or nonflared tips. **50 cannulas per case.**

Cat. No.	Description
Adult Cannulas	
001309	Flared tip
001311	Nonflared tip
Adult Cannulas With Crush-Resistant Lumen Tubing	
001320	Flared tip, with 2.1m tubing
001325	Nonflared tip, with 2.1m tubing



Neonate Cannula 002611



Adult Cannula 002600

AirLife® Cushion Nasal Cannulas

These nasal cannulas have a soft, clear design that provides optimum patient comfort. All supply tubing is crush-resistant to prevent occlusion and kinking. **50 cannulas per case.**

Cat. No.	Description
Cushion Cannulas	
002600	Adult, with 2.1m crush-resistant oxygen supply tubing
002602	Pediatric, with 2.1m crush-resistant oxygen supply tubing
002601	Infant, with 2.1m crush-resistant oxygen supply tubing
002611	Neonate, with 2.1m crush-resistant oxygen supply tubing

Oxygen Therapy



Demand cannula with 1.2m tubing

AirLife® Adult Demand Cannulas

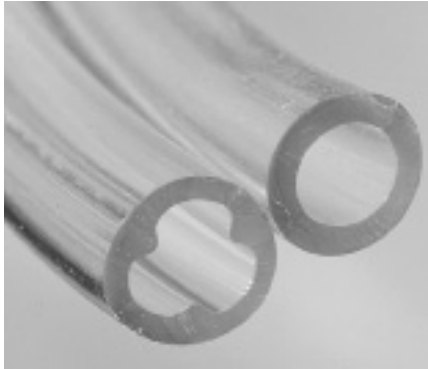
- Designed to give the highest degree of freedom and comfort to ambulatory oxygen patients

These cannulas feature inspiratory sensing from both lumen, offering innovation in both comfort and effective oxygen delivery for the long-term oxygen therapy patient. They sense patient inspiration and deliver oxygen through both lumens to maintain appropriate oxygen flow even when one nasal cavity is occluded. Made from the same material as the widely used AirLife™ cushion cannula, they feature soft, frosted tubing for patient comfort. **25 cannulas per case.**

Cat. No.	Description
002704	With 1.2m crush-resistant tubing

Oxygen Therapy

Tubing



Crush resistant oxygen tubing seen beside standard tubing

AirLife® Crush Resistant Oxygen Supply Tubing

We offer an extensive line of disposable vinyl-tipped oxygen tubing. It is available with crush-resistant lumen to resist occlusion. Choose from a variety of lengths ranging from 2.1m to 15.2m. Tubing with a U/Connect-It® connector attaches directly to flowmeters without an adapter.

Cat. No.	Description	Qty. Cs
Tubing With Crush-Resistant Lumen		
001302	2.1m	50
001304	6.4m	25
001305	7.6m	25
001306	15.2m	15
Tubing With Crush-Resistant Lumen and U/Connect-It® Connector		
001350	2.1m	50

Oxygen Therapy

Accessories



Oxygen tubing connector 001811

AirLife® Oxygen Tubing Connector

Our AirLife® oxygen tubing connector connects tubing with a diameter between 5 and 7mm. **50 connectors per case.**

Cat. No.	Connection
001811	Oxygen tubing connector



Oxygen nut/nipple connector 001840

AirLife® Universal Oxygen Nut/Nipple Connector

Our AirLife® nut/nipple connector can be used to connect oxygen tubing to an oxygen source. To use, simply attach the threaded end of the connector securely to a flowmeter and connect the tubing connector to the outlet stem. **50 connectors per box, five boxes (250 connectors) per case.**

Cat. No.	Description
001840	Oxygen nut/nipple connector

Oxygen Therapy



Oxygen catheter K21NE

AirLife® Oxygen Catheters

These catheters are available in two different sizes to suit your needs. **200 catheters per case.**

Cat. No.	Size
K21NE	10 French
K20NE	14 French

Aerosol Therapy

Face Masks



Under the chin style pediatric mask 001263



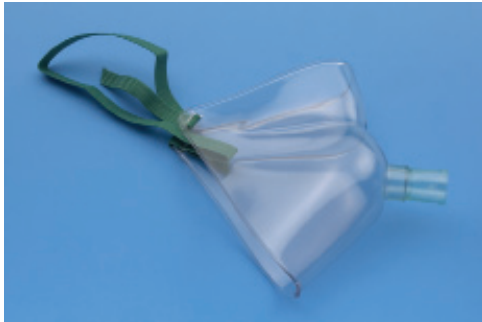
Short-style pediatric mask 001261

AirLife® Aerosol Masks

These soft, high-quality AirLife® disposable aerosol masks are made from high-grade resins. The smooth, feathered edges are designed for patient comfort while reducing irritation points. All AirLife® masks are designed for anatomical compatibility. A full line is available to meet requirements in pediatric and adult sizes. **50 masks per case.**

Cat. No.	Description
Adult Masks	
001206	Mask only, under-the-chin style
Pediatric Masks	
001261	Short-style mask
001263	Under-the-chin-style mask

Aerosol Therapy



Face tent mask 001220

AirLife® Face Tent Mask

The AirLife® disposable face tent mask is available in an adult under-the-chin style to be used with large bore aerosol tubing for high humidity aerosol therapy. The face tent is molded of soft vinyl. The under-the-chin design and clarity offer patient comfort, clear vision and ease of speech. The face tent incorporates a thick wall to give more stability to the mask. **50 masks per case.**

Cat. No.	Description
001220	Mask only



Tracheostomy mask 001227

AirLife® Tracheostomy Mask

The AirLife® disposable tracheostomy mask incorporates several patient features. The neckband is made from a comfortable, nonbiting material, and the swivel tubing connector permits access from either side of the patient. The special strap clips allow the mask to be removed with minimal disturbance to the patient. **50 masks per case.**

Cat. No.	Description
001227	Adult mask

Aerosol Therapy

Nebulizers



Misty-Neb™ Medication Nebulizer 002030G

AirLife® Misty-Neb™ Medication Nebulizers

These disposable nebulizers are constructed of high-impact plastic to resist breakage and have a built-in antispill column to minimize loss of costly medication should the unit be tipped over. Positive threading between the top and bottom of the bottle minimizes leakage of medication during nebulization. Medication filling is a simple task with the stabilizing benefit of built-in legs. Offered in a broad line of setups, AirLife® Misty-Neb™ handheld nebulizers are available with aerosol masks, tee adapters, oxygen tubing, mouthpieces, flextubes and finger controls.

Cat. No.	Description	Qty. Cs
Misty-Neb™ Nebulizers		
002030G	Nebulizer only	50
002031G	With 2.1m tubing	50
002043G	With pediatric aerosol mask (under-the-chin style)	50
7165G	With pediatric aerosol mask (under-the-chin style) and 2.1m tubing	50
002033G	With adult aerosol mask and 2.1m tubing	50
002035G	With Tee Adapter 001505 with one arm 22mm (7/8 in.) I.D., other arm 22mm (7/8 in.) O.D. 2.1m tubing and mouthpiece	50
002050G	With patient "Y" mouthpiece, flextube, oxygen tubing, flow directional valves and nonconductive respiratory bacterial filter	25
Misty-Neb™ Nebulizers With Baffled TEE Adapter 001508		
002034G	With 2.1m tubing and mouthpiece	50
002038G	With 2.1m tubing, mouthpiece and 6 in. flextube	50
002042G	With 2.1m tubing and intermittent finger control	50

Aerosol Therapy



Misty Max 10™ disposable nebulizer

AirLife® Misty Max 10™ Disposable Nebulizers

- An advanced jet design for fast treatment times
- Provide fine particles with a tighter distribution (higher percentage of respirable particles) than conventional nebulizers

Our AirLife® Misty Max 10™ disposable nebulizers deliver fast and effective treatment more efficiently to a wide range of patients. They feature a one-piece jet design that delivers high output rates, resulting in faster treatment times and consistent

medication delivery. A full 10mL capacity provides medication dosing flexibility. The anti-spill design helps prevent medication waste and allows the unit to be used at an angle to accommodate various patient positions.

Nebulizer With Bacteria Filter 002450 provides protection and convenience through its utilization of a reservoir and one-way valves for administration of medicated aerosol. The aerosol is contained within the nebulizer system instead of freely flowing into the surrounding air.

The chart below provides the in vitro performance characteristics of the AirLife® Misty Max 10™ nebulizer. In vitro measurements will help guide the end user as to the likelihood of effective delivery of inhaled medication to the lower respiratory tract.

Performance Characteristics	5L/min. Flow	8L/min. Flow	10L/min. Flow
MMAD			
- Mass median aerodynamic diameter (µM)	2.21 ±0.07	1.61 ±0.09	1.30 ±0.07
GSD			
- Geometric standard deviation	2.05 ±0.14	2.18 ±0.262	2.20 ±0.06
Respirable fraction			
- % <4.7µM (by mass)	79.7 ±1.7	85.2 ±3.2	91.5 ±0.9
Output rate			
- (gpm)	0.252 ±0.009	0.325 ±0.010	0.329 ±0.010
Treatment time			
- 3mL albuterol solution (min.)	9.97 ±0.03	8.16 ±0.30	7.36 ±0.26
Residual			
- (g)	0.91 ±0.03	0.92 ±0.06	0.89 ±0.04
Operating pressure			
- (psi)	10.7 ±0.5	24.9 ±0.3	34.2 ±0.8
Inhaled respirable mass			
- 3mL dose of 0.083% albuterol (µg)	365 ±10	384 ±4	362 ±14

Aerosol Therapy

AirLife® Misty Max 10™ Disposable Nebulizers (Cont)

Cat. No.	Description	Qty. Cs
Nebulizers Without Mask		
002438	With baffled tee adapter, 2.1m oxygen tubing with blue rigid tip, mouthpiece and 15cm flextube	50
002446	With baffled tee, 2.1m U/Connect-It® oxygen tubing with blue rigid tip, mouthpiece and 15cm flextube	50
Nebulizer Without Mask, With Bacteria Filter		
002450	With patient "Y" mouthpiece, 2.1m oxygen tubing with rigid blue tip, 15cm flextube and bacteria filter	25

Aerosol Therapy



Misty Finity® continuous nebulizer series left to right: 002550, 002533, 002530 and 002501

AirLife® Misty Finity® Continuous Nebulizers

The benefits of continuous nebulization therapy are enhanced with the reliability, flexibility and consistent performance of our Misty Finity® nebulizers. Across multiple patient settings, they enhance the delivery of aerosol therapy for patients within current medication dosing requirements. They feature easy assembly, spill-resistant caps and built-in IV ports. Multiple sizes and configurations are available.

Performance Data*	MMAD	GSD	Respirable Fraction (%<4.7mm)
Medium-Volume Nebulizer			
- Low flow, 2.5L/min. flow rate	1.68	1.9	89.6%
Medium-Volume Nebulizer			
- High-flow, 8L/min. flow rate	1.74	2.8	80.7%
Large-Volume Nebulizer			
- 11L/min. flow rate	2.80	2.5	*71.2%

The large-volume high-flow nebulizers offer both direct-connect (directly to flow meter) and straight-connect options (connect via oxygen tubing to flow meter). Their 240mL capacity allows for up to 8 hours of therapy.

The medium-volume nebulizers have both low-flow and high-flow options, and provide options for both mask and in-line therapy. The low-flow nebulizer allows for up to 4 hours of therapy; the high-flow nebulizers allow for up to 2 hours of therapy. All have a capacity of 30mL.

Aerosol Therapy

AirLife® Misty Finity® Continuous Nebulizers (Cont)

Cat. No.	Description	Qty. Cs
Medium-Volume Nebulizers		
002530	Low-flow with 2.1m O2 tubing	25
002533	High-flow with 2.1m O2 tubing	25
002534	High-flow with adult mask and 2.1m O2 tubing	25
Large-Volume Nebulizers		
002501	Direct connect	18
002502	Direct connect with adult mask and 2.4m 22mm corrugated tubing	18

*Difference statistically significant, per students t-test for means (p<0.05)

Aerosol Therapy



350mL nebulizer 002002



350mL nebulizer 5007P

AirLife® Empty Nebulizers and Heaters

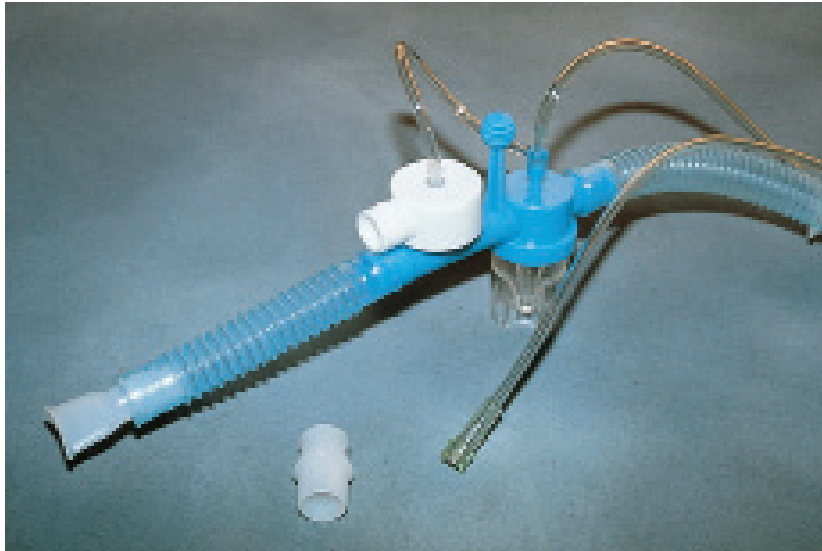
Empty Nebulizer 002002 has FIO₂ settings adjustable from 35% to 100%. It has ports for a feed set and an immersion-type heater.

Empty Nebulizers 5007P and 5207 have FIO₂ settings adjustable from 28% to 98%.

Cat. No.	Description	Qty. Cs
Empty Nebulizers		
002002	350mL, with air entrainment and immersion heater adapter	24
5007P	350mL	50
5207	500mL	50

Aerosol Therapy

IPPB (Intermittent Positive Pressure Breathing)



Manifold 001618

AirLife® IPPB Manifolds

AirLife® IPPB universal manifolds are compatible with Bird®, Puritan Bennett® and other commonly used IPPB devices. They feature a silicone diaphragm inside a retainer cap that can be turned to direct exhaled air away from the therapist and patient. All include 99cm (22mm I.D.) tubing, two supply lines, 15cm (22mm I.D.) flextube and mouthpiece. **50 manifolds per case.**

Cat. No.	Description
001618	<i>With 360° baffled Quick-Neb™ nebulizer for faster treatment time</i>

Aerosol Therapy

Accessories



EVA tubing 001410

AirLife® Corrugated Tubing

Our variety of AirLife® disposable corrugated tubing for aerosol and IPPB application offers flexibility and convenience to meet therapeutic needs. Composed of polyethylene/ethyl vinyl acetate (EVA) plastic for strength and drapability. Cuffs on all tube ends lock to 22mm connections.

Cat. No.	Description	Qty. Cs
Clear Tubing		
001400	1.8m	50
Clear Tubing, Segmented Every 15cm		
001410	1.8m	50
001405	30m, flat pack in dispenser box	1
Blue Tubing		
001420	1.8m	50
Blue Tubing, Segmented Every 15cm		
001450	1.8m	50
001427	30m, flat pack in dispenser box	1

Aerosol Therapy



Aerosol drainage bag 001561

AirLife® Aerosol Drainage Bags With “Y” Adapter

Our AirLife™ aerosol drainage units collect moisture accumulating from continuous in-line aerosol therapy.

Composed of durable vinyl, the bags attach to a trach tee or a patient “Y.” The drainage bags with 2L capacity have a hanger and a bottom drainage port. A one-way safety valve allows patients to breathe room air if the system occludes. **50 drainage bags per case.**

Cat. No.	Description
001561	“Y” unit with safety valve



Aerosol “blow-by” circuit 001218

AirLife® Aerosol “Blow-By” Circuit

Our trach tee circuit has 1.5m corrugated tubing on one limb and 15cm corrugated tubing on the other limb. **50 circuits per case.**

Cat. No.	Description
001218	Aerosol “blow-by” circuit

Aerosol Therapy



Universal mouthpiece 001000

AirLife® Universal Mouthpiece

Our polyethylene mouthpiece's graduated design fits directly into the patient end of all manifolds and flextubes as well as AirLife® trach tees. **500 mouthpieces per case.**

Cat. No.	Description
001000	Universal mouthpiece

Aerosol Therapy

Lung Exercisers/Incentive Spirometers



AirLife® volumetric incentive spirometer 001904A

AirLife® Volumetric Incentive Spirometers

Our AirLife™ volumetric incentive spirometers simplify deep breathing therapy with an intuitive design that prompts patients to correctly perform and monitor their own breathing exercises, even without direct supervision. A patient goal indicator can be adjusted and allows patients to monitor their own progress. Dual-sided calibrations clearly identify achieved volumes of up to 4000mL capacity. The flexible tubing lets the patient adjust the mouthpiece for use in various positions, and a mouthpiece holder provides storage when not in use. Available with or without one-way valve. **12 spirometers per case.**

Cat. No.	Description
2500mL Capacity	
001904A	Without 1-way valve
4000mL Capacity	
001902A	Without 1-way valve

AirLife® Airx™ Flow Incentive Spirometer

The AirLife® Airx™ flow incentive spirometer is disposable and designed for exercising and measurement of volume flow. Preoperative and postoperative patients increase their lung volume by keeping the instrument's inhalation-sensitive ball suspended with their inhalation. The flow passages vary in diameter, affecting the effort required to raise the ball. The ball stays suspended as long as the patient maintains this effort. The flow indicator dial can be adjusted to indicate flow rates in mL/second. Includes spirometer housing, detachable base plate, 30.4cm segmented corrugated tubing with 22mm O.D. and mouthpiece. **20 spirometers per case.**

Cat. No.	Description
001900	AirLife® brand Airx™ flow incentive spirometer

Humidifiers, Sterile Water and Feed Sets

Humidifiers



Prefilled Humidifier 002620G

AirLife® Prefilled Humidifier Systems

Filled with sterile water for inhalation, these humidifier systems feature a dual-purpose reservoir with a snap-open trigger, which makes a round opening for secure attachment of a humidifier adapter (available with Humidifier Systems 002620G). The oxygen pathway is designed to help prevent particulate from reaching oxygen delivery tubing. An audible relief valve warns if the patient's tubing becomes occluded.

Designed for convenient shelf storage, **Compact Humidifier 002620G** has a multiangle outlet port that prevents spitting, even at high flow rates, and a small bottle opening that prevents refilling. Includes an adapter and a 4 psi pressure-relief valve with alarm. **12 prefilled humidifiers per case.**

Cat. No.	Description	Size (mL)
Humidifier Systems		
002620G	With humidifier adapter	500

Humidifiers, Sterile Water and Feed Sets



Empty humidifiers 002003 (Left), 002006 (Right)

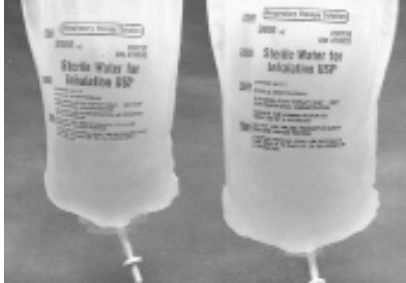
AirLife® Empty Humidifiers

Transparent for maximum clarity, our latex-free AirLife® empty humidifiers provide an economical alternative to prefilled humidifiers. These 370mL-capacity units have an audible-alarm pressure relief valve to warn patient and caregivers of obstructions to flow. Available with either a 3 or 6 psi pressure-relief valve. The 6 psi model is designed for applications where longer lengths of tubing can increase back pressure. With both the jar and lid constructed of break-resistant plastic, humidifiers also feature an ergonomically designed, durable plastic flowmeter nut. **50 humidifiers per case.**

Cat. No.	Description
002003	With 3 psi valve (white cap)
002006	With 6 psi valve (blue cap)

Humidifiers, Sterile Water and Feed Sets

Sterile Water



Solutions left to right: 2D0737G, 2D0735XG

AirLife® Solutions In Flexible Containers

The closed system design of these flexible solution bags helps minimize the possibility of contamination to your patients. When solution bags are attached to the appropriate feed sets, replenishing of empty nebulizers and refilling of chambers are simplified. The easy one-step setup offers convenience and reduces patient interruptions. The solution bags contain sterile water for inhalation, USP.

Cat. No.	Size (mL)	Qty. Cs
2D0735XG	1000	14
2D0737G	2000	6

Feed Sets



Respiratory Feed Set 2C7103

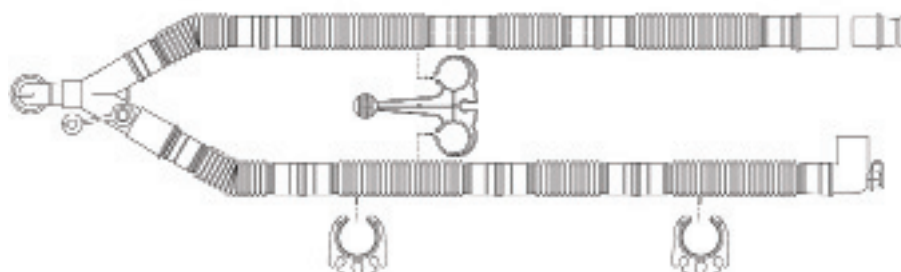
AirLife® Feed Sets For Use With Solution Bags

Feed Set 2C7103 is designed to adapt easily to Fisher & Paykel chambers. This set, combined with our flexible solution bags, provides a sterile method of refilling PEEP and CPAP systems with minimal loss of pressure and temperature. Set features a Luer trip and a spring-loaded pinch clamp. **48 feed sets per case.**

Cat. No.	Description
2C7103	Luer tip respiratory transfer set for use with Fisher & Paykel humidification chambers
2C7104	Respiratory therapy set for use with ultrasonic nebulizers

Heated Breathing Circuits

Adult



Dual-Heated Circuit

Dual-Heated Circuits

The circuit is made with corrugated tubing and has a temperature probe tee and inspiratory and expiratory limbs which disconnect at the "Y." Circuits contain hose clips, but no tube hangers.

The circuit is designed exclusively for use with Fisher & Paykel Humidifiers MR850, MR730 and HC500 and come with parallel wires. Circuit design offers an elbow connection, a dry gas line (except for Circuit RT600-850) and a temperature probe tee at the "Y" . **20 circuits per case.**

Cat. No.	Htd/ Non-Htd	Circuit Length	For Use With Ventilators	"Y" Style
RT500-853	Dual	1.5m	All listed below	Y
For use with:				
1. Bird 8400®, T-Bird®/Legacy				
2. Draeger Evita™				
3. Nellcor Puritan Bennett™ 7200, 840				
4. Siemens®/ Maquet Servo I, Servo 300 and 300A along with the 900 series.				
5. Cardinal Health Avea and Vela				
6. GE Engstrom Carestation				
7. Hamilton Amadeus, Galileo, Veolar and Raphael				

Heated Breathing Circuits

Single-Heated Circuits

All circuits are made with corrugated tubing and have a temperature probe tee and inspiratory and expiratory limbs which disconnect at the "Y." Circuits contain hose clips, but no tube hangers.

All circuits are designed exclusively for use with Fisher & Paykel Humidifiers MR850, MR730 and HC500 and come with parallel wires. Circuit design offers an elbow connection (except for Circuits RT600-850 and RT609-855), a dry gas line (except for Circuit RT600-850) a temperature probe tee at the "Y" (except for Circuit RT609-855, which has the probe on the valve). Circuits RT600-850 and RT607-854 have a pressure port on the "Y"; Circuit RT609-855 also has a pressure port, located on the circuit's valve, as well as an Omni-Flex™ connector. Circuits come assembled and ready to use. **20 circuits per case.**

Cat. No.	Htd/ Non-Htd	Circuit Length	For Use With Ventilators	"Y" Style	Pressure Port on "Y"	Pressure Lines	Exh. Valve	Water Trap
RT607-854	Single	1.8m	2, 3, 4, 5, 6, 7, 8, 9, 10, 14	Y	x			x
RT600-850	Single	1.8m	Heated inspiratory limb	N/A	x			
RT609-855	Single	1.6m	11, 12, 13, 14,	N/A	On valve	3mm, 4.7mm	x	

*Order Exhalation Valve Kit 6116-504

Key

1. Bear 1®, 2®, 3®, Puritan Bennett® brand MA-1™, MA-2™
2. Bear 1000®, Bear 5®, 6.3cm pressure line (4855-504)
3. Bird 6400® 3mm pressure line (6605-504)
4. Bird 8400®, T-Bird®/Legacy
5. Draeger Evita™
6. Hamilton Veolar®
7. Infrasonics Adult Star™ 3mm pressure line (6600-504)
8. Newport Breeze®, Newport Wave® 3mm pressure line (6606-504)
9. Nellcor Puritan Bennett™ 7200, 840
10. Nellcor Puritan Bennett™ 740, 760 (single-heated circuits only)
11. Aequitron LP6™, LP6 Plus™, LP10™, LP20™, Achieva
12. Bear 33®
13. LIFECARE® brand PLV® 100, PLV® 102
14. Siemens®/ Maquet Servo I, Servo 300 and 300A along with the 900 series.

Heated Breathing Circuits

Designed to be used with Fisher & Paykel Humidifiers MR600, MR620 and MR630 and Heater Wire Adapter 0045-20 (single heated only). Applications with Fisher & Paykel Humidifiers MR700, MR720 and MR730 will require the use of Heater Wire Adapter 900MR558 in conjunction with Adapter 0045-20 or 900MR559. Humidifier supply line included. **20 circuits per case.**

Cat. No.	Description
1200-H08	1.8m single heated, ported "Y", elbow, small volume nebulizer adapter and water trap
For use with:	
<ol style="list-style-type: none"> 1. Bear 5®, Bear 1000®, Bird 8400®, 2. Nellcor Puritan-Bennett™ 7200, 740, 760, 840 3. Siemens®/ Maquet Servo I, Servo 300 and 300A along with the 900 series. 4. Cardinal Health Avea and Vela 5. GE Engstrom Carestation 6. Hamilton Amadeus, Galileo, Veolar and Raphael 7. Draeger 1, 2, 4, Evita XL 	

Portable Single-Heated Circuits

Designed to be used with Fisher & Paykel Humidifier MR630 and Heater Wire Adapter 0045-20 (single heated only). Circuits feature standard "Y" style configuration. Applications with Fisher & Paykel Humidifiers MR730 and HC500 require the use of Heater Wire Adapter 900MR539 (single heated only). Humidifier supply line included. **30 circuits per case.**

Cat. No.	Size	Circuit Length	For Use With Ventilators	Fisher and Paykel Humidifiers	Electrical Adapter (Pigtail)	Omni-Flex™ Connector	Temp Probe Tee	Pressure Port on "Y"	Pressure Lines
6462-H08	A	1.6m	All listed below	MR630 MR730	0045-20 900MR559	X	X	X	3mm, 4.7mm
For use with:									
<ol style="list-style-type: none"> 8. Aequitron LP6™, LP6 Plus™, LP10™, LP20™ 9. Bear 33® 10. LIFECARE® brand PLV®-100, PLV®-102 11. Nellcor Puritan Bennett® 2800, 2801 									
A Adult									

Heated Breathing Circuits

Pediatric

Dual-Heated Circuits

These circuits are designed exclusively for use with Fisher & Paykel humidifiers. All circuits are made of corrugated tubing. Inspiratory limbs disconnect at the "Y." . Circuits are assembled and ready for use. **20 circuits per case.**

Cat. No.	Limb Type	Insp. Limb	Exp. Limb	Vents	Fisher and Paykel Humidifiers	Electrical Adapter (Pigtail)	"Y" Style	Temp. Probe	Pressure Lines	Dry Gas Line	Water Trap
RT509-852	Dual	1.5m	1.6m	All listed below	MR850	900MR805	Y	900MR869 (1.5m)	Y	Y	
6983-H12	Single	2.7m	2.7m	All listed below	MR730	900MR559		900MR571 (2.5m)	Y	Y	Y

For use with:

1. Draeger 1, 2, 4, Evita XL
2. Hamilton Amadeus, Galileo, Veolar and Raphael
3. Siemens®/ Maquet Servo I, Servo 300, 300A and 900C
4. Cardinal Health Avea and Vela, Bear Cub, Bird VIP, 8400
5. GE Engstrom Carestation
6. Nellcor Puritan-Bennett™ 7200, 740, 760, 840

Heated Breathing Circuits

Single-Heated Circuit

These circuits are designed exclusively for use with Fisher & Paykel humidifiers. All circuits are made of corrugated tubing. Inspiratory limbs disconnect at the "Y." Circuits are assembled and ready for use.
20 circuits per case.

Cat. No.	Tube Type	Insp. Limb	Vents	Fisher and Paykel Humidifiers	Electrical Adapter (Pigtail)	Temp. Probe	Pressure Lines	Dry Gas Line	Water Trap
6460-H12	Single	1.5m	All listed below	HC500\ MR730	900MR559	900MR569 (1.5m)	1.5m	Y	N
For use with: <ol style="list-style-type: none"> 1. LP6 2. LP6 Plus 3. LP10 4. LP20 5. PLV-100 and 102 6. Bear 33 7. Nellcor PB 2800 and 2801 									

Portable Single-Heated Circuits

20 circuits per case.

Cat. No.	Tube Type	Insp. Limb	Vents	Fisher and Paykel Humidifiers	Electrical Adapter (Pigtail)	Y Style	Temp. Probe	Pressure Lines	Dry Gas Line
RT609-856	Single	1.8m	All listed below	MR850	900MR805	Y	900MR861 (1.8m)	Y	Y
For use with: <ol style="list-style-type: none"> 1. LP6 2. LP6 Plus 3. LP10 4. LP20 5. PLV-100 and 102 6. Bear 33 7. Nellcor PB 2800 and 2801 									

Heated Breathing Circuits

Infant

Dual-Heated Circuits

These circuits are designed exclusively for use with Fisher & Paykel humidifiers. All circuits are made of corrugated tubing. Inspiratory limbs disconnect at the "Y.". Circuits are assembled and ready for use. **30 circuits per case.**

Cat. No.	Tube Type	Insp. Limb	Exp. Limb	Vents	Fisher and Paykel Humidifiers	Electrical Adapter (Pigtail)	"Y" Style	Temp. Probe	Pressure Lines	Dry Gas Line
RT4851-12	Dual	1.2m	1.2m	All listed below	MR850	900MR805	Y	900MR869 (1.5m)	Y	Y

For use with:

1. Cardinal Health Avea, Vela, Bear Cub®, Bird VIP®
2. Draeger Baby Log™
3. Infrasonics Infant Star™
4. Nellcor Puritan Bennett® 840
5. GE Engstrom Carestation
6. Siemens®/ Maquet Servo I, 300A

Heated Breathing Circuits

Single-Heated Circuit

Water traps are pre-installed in the expiratory limb. Circuits are ready for use. **30 circuits per case.**

Cat. No.	Tube Type	Circuit Insp.	Length Exp.	For Use With Ventilators	Fisher and Paykel Humidifiers	Electrical Adapter (Pigtail)	"Y" Style	Probe Tee	Pressure Lines	Dry Gas Line
9052-4S2	C	1.2m	1.2m	All listed below	MR730	900MR559	Y	30.4cm	3mm, 4.7mm	60.9cm

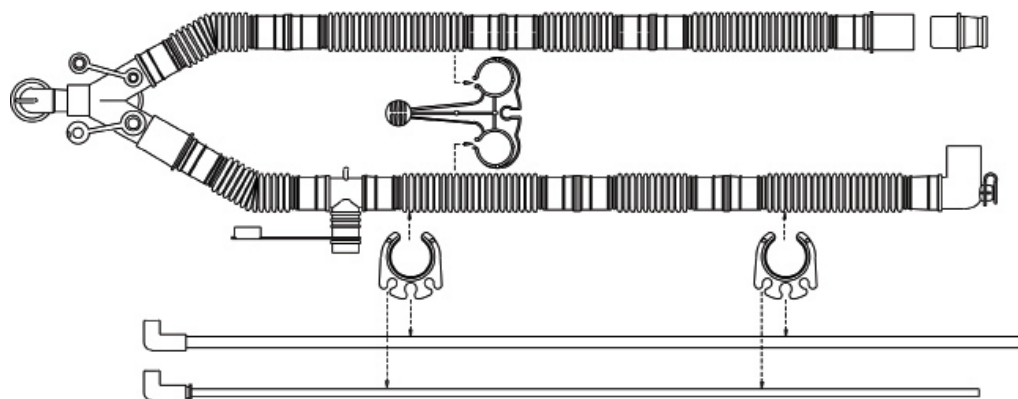
For use with:

1. Cardinal Health Avea, Vela
2. Bear BP200®, Bear Cub® 750, 3mm pressure line
3. Bear Cub®, 4.7mm pressure line
4. Bird 8400®, T-Bird®
5. Bird VIP®, 3mm pressure line
6. Draeger Baby Log™ 8000
7. Infrasonics Star™ 950, 500, 3mm pressure line
8. Newport Breeze®, Newport Wave®, 3mm pressure line
9. Nellcor Puritan Bennett® 7200, 840
10. Sechrist® IV, 200, 3mm pressure line
11. Siemens®/ Maquet Servo I, 300 and 300A

C Corrugated Tube

Non-Heated Breathing Circuits

Adult



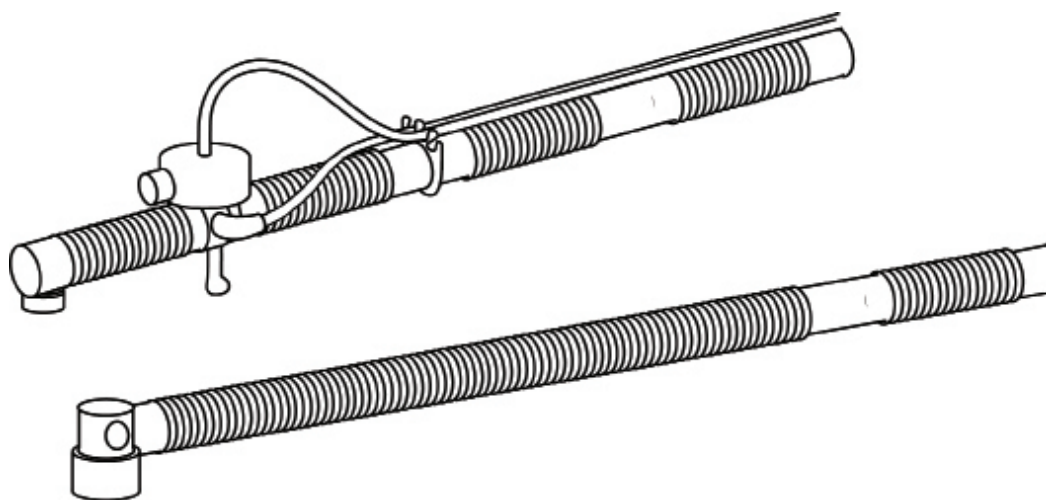
Non-Heated Breathing Circuit OY1777

Dual-Limb Circuits

Cat. No.	Bear 5 [®] , 1000 [®]	Bird 6400 [®]	Bird 8400 [®]	Infrasonics Adult Star [™]	Puritan Bennett [®] 7200	Siemens Servo [®] 300C, 900C
001793			X		X	
001794	X			X	X	X
OY1777	X	X		X	X	X
OY1779	X	X		X	X	X

Cat. No.	Description	Qty. Cs
001793	Two 1.8m more flexible corrugated tubes, ported patient "Y" with port plugs, elbow connector and tube hanger	6
001794	Two 1.8m more flexible corrugated tubes, ported patient "Y" with port elbow connector, tube hanger and 6.3cm pressure sensing line	6
OY1777	Two 1.8m more flexible corrugated tubes, ported patient "Y" with port plugs, elbow connector, inspiratory connector, angled temp port with plug at distal limb, tube hanger, 6.3cm and 3mm pressure sensing lines and valved tee	10
OY1779	Two 1.8m more flexible corrugated tubes, ported patient "Y" with port plugs, elbow connector, inspiratory connector, angled temp port with plug at distal limb, tube hanger and 6.3cm and 3mm pressuring sensing lines	10

Non-Heated Breathing Circuits



Non-Heated Breathing Circuit 001795

Single-Limb Portable Circuit

Cat. No.	Life Products LP4™, LP5™	Aequitron LP6™, LP6 Plus™, LP10™	Puritan Bennett® 2800	LIFECARE® PLV®-100, PLV®- 102
001795	X	X		X

Cat. No.	Description	Qty. Cs
001795	15cm patient tube and trach elbow adapter, 15mm I.D.; 1.5m patient air tube; 1.7m exhalation supply line, 0.137" I.D.; 1.7m pressure sensing line, 0.200" I.D., and tip adapter; 45.7cm cascade tube and elbow adapter, 22mm I.D., silicone diaphragm	10

Non-Heated Breathing Circuits

Pediatric

Dual-Limb Circuit

20 circuits per case.

Cat. No.	Bear Cub®	Bear BP200®	Sechrist®	Infrasonics Infant Star™	Siemens Servo® 300C, 900C
1206-701	X	X	X	X	X

Cat. No.	Description
1206-701	1.2m non-heated parallel "Y" with Omni-Flex™ connector inspiratory and expiratory self sealing water traps, humidifier supply line included

Portable Circuits

20 circuits per case.

Cat. No.	Life Products LP4™, LP5™	Aequitron LP6™, LP6 Plus™, LP10™	Puritan Bennett® 2800	LIFECARE® PLV®-100, PLV®-102
6949-701	X	X	X	X
6833-701	X	X	X	X

Cat. No.	Description
6949-701	1.9m, with Omni-Flex™ adapter, 15mm I.D.; 15cm patient tube to exhalation valve; two 91cm tubes with self-sealing water trap; 2.4m exhalation supply line; 2.4m pressure sensing line; chamber outlet probe adapter and humidification supply line included
6833-701	1.8m, with "Y" connector and Omni-Flex™ adapter, 15mm I.D.; two inspiratory 91cm patient tubes with self-sealing water trap; expiratory limb 30cm to exhalation valve; 2.4m exhalation supply line; 1.8m pressure sensing line; chamber outlet probe adapter and humidifier supply line included

Non-Heated Breathing Circuits

Infant

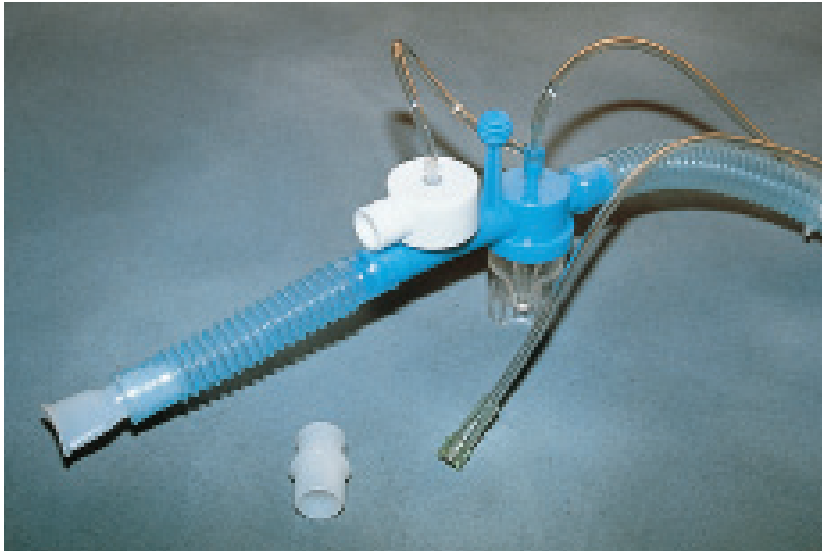
Dual-Limb Circuit

1.2m non-heated, with inspiratory and expiratory self-sealing water traps, chamber outlet probe adapter and humidifier supply line included. **30 circuits per case.**

Cat. No.	Description
6800-503	Infant dual-limb ventilator circuit
For use with:	
<ol style="list-style-type: none">1. Cardinal Health Avea and Vela2. Bear BP200®, Bear Cub® 750, 3mm pressure line3. Bear Cub®, 4.7mm pressure line4. Bird VIP®, 3mm pressure line5. Sechrist®6. Infrasonics Infant Star™7. Siemens®/ Maquet Servo 300C and 900C	

Non-Heated Breathing Circuits

IPPB (Intermittent Positive Pressure Breathing)



Manifold 001618

AirLife® IPPB Manifolds

AirLife® IPPB universal manifolds are compatible with Bird®, Puritan Bennett® and other commonly used IPPB devices. They feature a silicone diaphragm inside a retainer cap that can be turned to direct exhaled air away from the therapist and patient. All include 99cm (22mm I.D.) tubing, two supply lines, 15cm (22mm I.D.) flextube and mouthpiece. **50 manifolds per case.**

Cat. No.	Description
001618	<i>With 360° baffled Quick-Neb™ nebulizer for faster treatment time</i>

Breathing Circuit Accessories

Connectors and Adapters



Trach tee adapter 001500



Trach tee adapter with flextube and oxygen stem connector 001507



Tee adapter with mouthpiece 001505



Baffled tee adapter 001508

AirLife® Tee Adapters

Constructed of clear, break-resistant plastic, our trach tee adapters can be used with or without drainage. Trach tees have one-way valves that facilitate ventilator monitoring setups and various pulmonary function measurements. **50 adapters per case.**

Cat. No.	Description
001500	Trach tee 22mm O.D. on both ends with a 15mm I.D. base
001503	Tee adapter for small nebulizers, 18mm base
001505	Tee adapter with 22mm I.D./ 22mm O.D. arms, 18mm I.D. base and mouthpiece
001506	Mouthpiece with Tee Adapter 001503
001507	Trach tee, with 15cm flextube, oxygen stem connector with thermo-suction port
001508	Baffled tee adapter for small nebulizers, with 22mm O.D. arms and 18mm I.D. base

Breathing Circuit Accessories



Valved Tee Adapters 002060 and 002061

AirLife™ Valved Tee™ Adapters

- Simplify delivery of aerosolized medication to ventilator patients
- Reduce risk of circuit pressure loss
- Provide a closed system to minimize risk of contamination

Our Valved Tee™ adapters make it easy to deliver aerosolized medication to your ventilator patients. Used in conjunction with a nebulizer, the Valved Tee™ adapter offers a safe and convenient way to introduce medication into the circuit.

Unlike other tee adapters that require time-consuming and potentially hazardous breaks in the system, the Valved Tee™ adapter becomes a permanent part of the ventilator circuit. Its spring-loaded valve opens and closes the circuit during nebulizer insertion and removal.

Because the adapter maintains a closed system, the risk of condensate being accidentally sprayed into the air is greatly reduced. With spring-loaded valve and cap. Include 18mm base. **30 adapters per case.**

Cat. No.	Size
002060	22mm O.D. x 22mm O.D.
002061	22mm I.D. x 22mm O.D.

Breathing Circuit Accessories



Y connector 001831

AirLife® Adult Y Connector With Elbow

Our adult Y connectors have 22mm O.D. on both “Y” arms and an elbow adapter for patient trach attachment. Elbow fits either a 22mm I.D. or 15mm O.D. adapter. Includes an integral thermometer/thermistor and pressure-sensing ports with attached, hinged caps. **50 connectors per case.**

Cat. No.	Connection
001831	Connector with integral thermometer and pressure-sensing ports, 22mm O.D. x 22mm O.D. x 15mm I.D.



Pediatric connector 3215-504G



Adult connector 3222-504G

AirLife® Omni-Flex™ Connectors

Our AirLife® connectors for Omni-Flex™ systems provide an additional length of tubing for your vertical circuit for increased flexibility and mobility. Connect between a patient’s endotracheal or tracheostomy tube and ventilator circuit “Y” connection or HME. Expands from 5 to 6.5cm. **50 connectors per case.**

Cat. No.	Description
3215-504G	Pediatric, 15mm O.D. x 15mm I.D.
3222-504G	Adult, 15mm O.D. x 22mm O.D.

Breathing Circuit Accessories



Ventilator Elbow 001550

AirLife® Ventilator Elbows With Suction Port

Our AirLife® ventilator elbow with suction port may be used with small-volume nebulizers or respirators. 15mm I.D. base. Both include a cap. Delivered clean and ready to use. **50 elbows per case.**

Cat. No.	Connection
001550	22mm I.D. x 22mm O.D. inlet arm
001551	22mm I.D. inlet arm



U/Adapt-It™ Exhalation Manifold Body
004379

AirLife® U/Adapt-It™ Exhalation Manifold Body

Our U/Adapt-It™ exhalation manifold body have a closed stem and holding arm. Manifold Body 004379 includes a 22mm O.D. plug. **50 exhalation manifold bodies per case.**

Cat. No.	Connection
004379	22mm I.D. x 22mm O.D.

Breathing Circuit Accessories

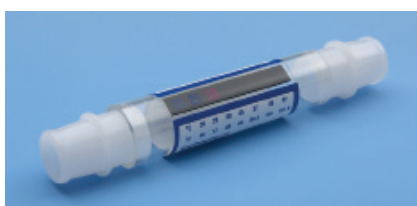


Water trap 001860

AirLife® Disposable Water Traps

Our water traps are for use with 22mm tubing. **50 water traps per case.**

Cat. No.	Description
001860	Self-sealing, for connecting in-line to standard 22mm tubing



Disposable Thermometer 001950

AirLife® Disposable Thermometers

The AirLife® brand TempO₂ I™ and TempO₂ II™ systems offer a multitude of thermometer configurations, both liquid column and liquid crystal, designed for all applications and to meet most temperature monitoring situations. Liquid column thermometers may be used with most ventilator manifolds and heated aerosol setups. The small tapered end will fit most ported straight adapters and patient "Y" adapters, or its 15mm O.D. circumference may be inserted into any standard tee adapter. Readout is provided in both Fahrenheit and Celsius. Liquid crystal thermometer produces a direct digital readout that can be placed in the inspiratory limb of the patient circuit. It has a Celsius scale of 20° to 42° with a convenient Fahrenheit conversion table alongside. Temperature is determined by using the three-color readout bands. Green means temperature is exact, tan means it is slightly higher and blue means it is slightly lower. **50 thermometers per case.**

Cat. No.	Description
TempO ₂ I™ Liquid Column Thermometers	
001950	Thermometer only
001951	With 004086 U/Adapt-It™ connector, both arms 22mm (7/8") O.D.
TempO ₂ II™ Liquid Crystal Thermometer	
001955	With two 22mm O.D. adapters

Breathing Circuit Accessories

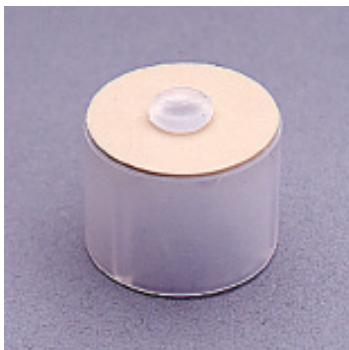


Ventilator monitoring adapter circuit 001504

AirLife® Ventilator Monitoring Adapter Circuit

Our circuit is a flexible, single-patient-use, one-way valving system designed for pulmonary function measurements, such as tidal or minute volume, vital capacity and negative inspiratory force. Circuit comes with a U/Adapt-It™ adapter with 15mm I.D. base, 15cm flextube, two one-way valves, an oxygen tube connector, a 22mm O.D. tube adapter and a 22mm I.D./15mm I.D. adapter. **50 kits per case.**

Cat. No.	Description
001504	Ventilator monitoring adapter circuit



One-Way Valve 001802

AirLife® Large One-Way Valve

- For U/Adapt-It™ system

Our large one-way valve has a 22mm O.D. on both ends. May be used to control directional flow. **50 valves per case.**

Cat. No.	Description
001802	Large 1-way valve

Breathing Circuit Accessories



MiniSpacer® Dual-Spray In-Line Devices
2166-504G and 2169-504G

AirLife® Metered Dose Inhaler Delivery Systems

For in-line ventilator applications. **30 devices per case.**

Cat. No.	Description
MiniSpacer® Dual-Spray In-Line Devices	
2169-504G	22mm O.D. x 22mm O.D. connections
2166-504G	22mm O.D. x 22mm I.D. connections

HME/HMEF and Filters

HME/HMEF



Adult filtered 003005



Adult filtered, with 15cm flextube 003009



HEPA filtered 003007



Adult Non-Filtered 003003



Trach, with suction port 0030014

AirLife® Hygroscopic Condenser Humidifiers

Our AirLife® high-efficiency filter is made of hydrophobic polypropylene and has 22/15mm male/female and 22mm female ISO connectors. **50 filters per case.**

Cat. No.	Description	Connection	Qty. Cs
Filtered			
003005	Adult filtered	15/22mm ISO male/female for Y-piece; 15/22mm ISO female/male for ET tube, face mask, closed suctioning system, etc.; standard Luer lock port for gas sampling at dry and filtered side	25
003009	Adult filtered, with 15cm flextube	15/22mm ISO male/female for Y-piece; 15mm female for ET tube, face mask, closed suctioning system, etc.; standard Luer lock port for gas sampling at dry and filtered side	15
003007	HEPA filtered	5mm ISO male for Y-piece; 15/22mm ISO female/male for ET tube, face mask, closed suctioning system, etc.; standard Luer lock port for gas sampling at dry and filtered side	20

AirLife® Hygroscopic Condenser Humidifiers Specifications on page 52

HME/HMEF and Filters

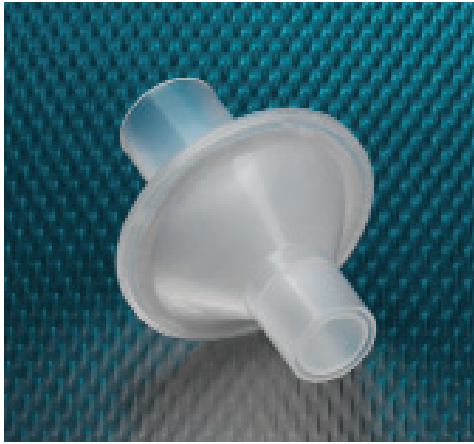
Non-Filtered			
003003	Type I, adult	15mm male, 15/22mm female/male	50
003014	Trach, with suction port	15mm female for trach tube	50

AirLife® Hygroscopic Condenser Humidifier Specifications

Cat. No.	Tidal Volume	Moisture Output	Moisture Loss	Flow Resistance	Dead Space	Weight	Filtration Efficiency	Connections
003005	250 to 1500mL	50mL: 30.2mg H ₂ O/L	500mL: 7.4mg H ₂ O/L	1.0L/s 2.1cm H ₂ O	55mL	33g	BFE 99.999% VFE 99.998% NaCl (ISO 23328-1) 99.22% @ 24 hour conditioning	15mm/22mm ISO male/female for "Y" piece 15/22mm female/male for ET tube, mask, closed suctioning Standard Luer lock for gas sampling
003009	300 to 1500mL	500mL: 30.2mg H ₂ O/L	500mL: 7.4mg H ₂ O/L	1.0L/s 2.8cm H ₂ O	16mL	6g	BFE 99.999% VFE 99.99% NaCl (ISO 23328-1) 99.22% @ 24 hour conditioning	15mm ISO male for "Y" piece 15/22mm female/male for ET tube, mask, closed suctioning Standard Luer lock for gas sampling
003007	250 to 1500mL	500mL: 31.8mg H ₂ O/L	500mL: 5.8mg H ₂ O/L	1.0L/s 2.1cm H ₂ O	83mL	43g	BFE 99.9999+% VFE 99.9999% NaCl (ISO 23328-1) 99.998% @ 24 hour conditioning	15mm ISO male for "Y" piece 15/22mm female/male for ET tube, mask, closed suctioning Standard Luer lock for gas sampling
003003	150 to 1500mL	500mL: 31.2mg H ₂ O/L	500mL: 6.4mg H ₂ O/L	1.0L/s 2.5cm H ₂ O	31mL	12g	-	15mm male
003014	150 to 1250mL	500mL: 25.5mg H ₂ O/L	250mL: 12.1mg H ₂ O/L	1.0L/s 29cm H ₂ O	16mL	6g	-	15mm female

HME/HMEF and Filters

Filters



Filter 001851

AirLife® Nonconductive Bacterial/Viral-Retentive Filter

AirLife® disposable respiratory filter traps bacteria and viral particles by electrostatic attraction and its dense makeup. Filter provides defense against infection. Small, lightweight and translucent, our hydrophobic filter resists moisture and offers easy visualization of water buildup. **50 filters per case.**

Specifications	
Bacterial filtration efficiency (BFE)	99.9%
Viral filtration efficiency (VFE)	99.7%
Flow resistance	
- At 1.0L/sec.	0.54cm H2O
- At 1.0L/sec. after 48 hrs.	0.90cm H2O
Compressible volume	43mL

Cat. No.	Description
001851	Nonconductive bacterial/viral-retentive filter

HME/HMEF and Filters



HEPA filters 001852

AirLife® HEPA Filter

- Lightweight for greater patient comfort

Our AirLife® HEPA filter offers low flow resistance and HEPA filtration efficiency to enable your patient to breathe easier. It is a nonconductive hydrophobic HEPA (high-efficiency particulate air) filter with 22/15mm male/female and 22mm female ASTM conical connectors and a transparent housing that allows for visualization of secretion accumulation or potential occlusions. **20 filters per case.**

Specifications	
Bacterial filtration efficiency (BFE)	99.9999+%
Viral filtration efficiency (VFE)	99.9999+%
DOP filtration efficiency	99.998% (0.3µ particles)
Flow resistance	
- At 0.5L/sec.	0.4cm H2O
- At 1.0L/sec.	0.9cm H2O
- At 1.0L/sec. after 24 hr.	1.2cm H2O
- At 1.0L/sec. after 48 hr.	1.7cm H2O
Compressible volume	84mL
Weight	45g

Cat. No.	Description
001852	AirLife® HEPA filter

HME/HMEF and Filters



High-Efficiency Filter 001853

AirLife® High-Efficiency Respiratory Filter With Diffuser

Our AirLife® high-efficiency filter is made of hydrophobic polypropylene and has 22/15mm male/female and 22mm female ISO connectors. **50 filters per case.**

Specifications	
Bacterial filtration efficiency (BFE)	99.999+%
Viral filtration efficiency	99.999+%
NaCl filtration efficiency	99.8%
Flow resistance	
- At 0.5L/sec.	1.2cm H ₂ O
- At 1.0L/sec.	2.8cm H ₂ O
Compressible volume	59mL

Cat. No.	Description
001853	AirLife® high-efficiency respiratory filter with diffuser

Resuscitation Bags and Devices

Resuscitation Bags



Adult resuscitation bag 2K8005

AirLife® Disposable Resuscitation Bags

Reliable and affordable, our disposable resuscitation devices answer your contamination concerns in today's healthcare environment. Our devices feature a low-profile textured bag, manometer port, double-swivel elbow and removable accumulator. Available with or without PEEP valve. **6 resuscitation bags per case.**

Cat. No.	Infant	Pediatric	Adult	Mask	Reservoir Style			PEEP Valve	Pop-Off Valve With Lock	Manometer Port
					Bag	Corrugated Yubing	Large Bore Tubing			
2K8004			X	X	X					
2K8005			X	X		X				
2K8008		X		X		X		40cm	X	
2K80010	X			X		X		40cm	X	
2K80017			X	X			X			
2K80037		X		X		X		X	40cm	
2K80038	X			X		X		X	40cm	

Cat. No.	Description
Resuscitation Bags Without PEEP Valve	
2K8004	Adult, with mask, oxygen reservoir bag
2K8005	Adult, with mask, 101.6cm oxygen reservoir tubing
2K8017	Adult, with mask, variable volume oxygen reservoir tubing
2K8008	Pediatric, with mask, 101.6cm oxygen reservoir tubing
2K8010	Infant, with mask, 101.6cm oxygen reservoir tubing
Resuscitation Bags With PEEP Valve	
2K8037	Pediatric, with mask, 101.6cm oxygen reservoir tubing
2K8038	Infant, with mask, 101.6cm oxygen reservoir tubing

Resuscitation Bags and Devices

Resuscitation Devices & Accessories



Mouth-to-mask resuscitator 2K8012

AirLife® Mouth-To-Mask Resuscitators

Our AirLife® mouth-to-mask resuscitators include oxygen port, filter and mouthpiece. Choose pediatric or adult. **10 resuscitators per case.**

Cat. No.	Description
2K8012	Adult with 15cm tubing
2K8013	Pediatric with 15cm tubing

Suction Catheters and Kits



Colour Coded Suction Catheters



Catheter depth markings



Beveled catheter tip with two oval eyes

AirLife® Colour Coded Single Catheters

Our Tri-Flo® suction catheters are designed with two oval eyes and a beveled tip to be less traumatic to your patients while still providing high suctioning efficiency. Clear connectors and depth markings are standard on all 5/6 and 8 Fr sizes.

Cat. No.	Size (Fr)
With Control Port, Looped (50/CS)	
T63CG	5/6
T64CG	8
T61CG	10
T68CG	12
T60CG	14
With Control Port, Straight Pack (100/CS)	
T261CG	10
T268CG	12
T260CG	14

Suction Catheters and Kits

Suction Catheter Kits



Kit with nitrile gloves 4864T

AirLife® Colour Coded Suction Kits In Peel Pouch

Our suction kits include a colour coded suction catheter, a pop-up solution basin and two sturdy, precuffed exam gloves in an inner wallet. Kits with 5/6 and 8 Fr catheters feature catheters with depth markings. **100 kits per case.**

Cat. No.	Size (Fr)
With Blue Nitrile Gloves	
4863TG	5/6
4867TG	8
4865TG	10
4868TG	12
4864TG	14
4866TG	18

Suction Catheters and Kits



Kit 4893T

AirLife® Colour Coded Economy Suction Kits

Our economy suction kits include a colour coded suction catheter, a pop-up solution basin and two powder-free blue nitrile exam gloves. They are packaged in a plastic peel pouch for ease of use and quick preparation. Kits with 5/6 or 8 Fr catheters feature depth markings. **100 kits per case.**

Cat. No.	Size (Fr)
With 2 Powder-Free Blue Nitrile Gloves	
4893TG	5/6
4897TG	8
4895TG	10
4898TG	12
4894TG	14

Tracheostomy Care Kits

Tracheostomy Care Kits



Tracheostomy care kit 3T4691A

Tracheostomy Care Kit

Our kits are supplied in tray with a coated paper lid. The kit includes:

- Trach gauze dressing
- Twill tape, 86.6cm
- Trach brush
- Four gauze sponges, 10.1cm x 10.1cm
- 2 cotton-tipped applicators
- 3 pipe cleaners
- 1 pair vinyl gloves
- 1 water-resistant towel

30 kits per case.

Cat. No.	Components
3T4691A	As Above

Tracheostomy Care Kits



Tracheostomy cleaning tray 4681A

Complete Tracheostomy Cleaning Tray

We offer a sterile, single-use tray for care of the tracheostomy patient. Overwrap trays include:

- Three rigid basins for cleaning, soaking and rinsing
- Presewn trach dressing
- Three gauze sponges
- Three pipe cleaners
- Cleaning brush
- Three cotton-tipped applicators
- Twill tape, 81.2cm
- Plastic forceps
- Water-resistant drape
- Hospital wrap
- 2 vinyl gloves

20 trays per case.

Cat. No.	Additional Components
4681A	As above

United Kingdom Office
The Crescent
Jays Close
Basingstoke
Hants
RG22 4BS
Tel: + 44 1256 388200
Email: UK-Customer-Service@carefusion.com

Germany Office
Leibnizstrasse 7
Hoechberg
D 97204
Tel: +49 931 49720
Email: customer.serviceDE@carefusion.com

The Netherlands Office
De Molen 8-10
Houten
3994 DB
Tel: +31 030 2289711
Email: customerservice-NL@carefusion.com


Spain Office
Edificio Veganova
Avenida de La Vega, nº 1
Edificio 1 - 1ª Planta
28108 Alcobendas
Madrid
Tel: +34 91418 7700
Email: customer.serviceES@carefusion.com


France Office
Le Val Saint Quentin
2 rue René Caudron
78960 Voisins le Bretonneux
Tel: + 33 1 30 05 34 00
Email: g-frma-serviceclient@carefusion.com

Italy Office
Via Ticino 4 Sesto
50019 Fiorentino
Florence
Tel: +39 055 3033 9300
Email: customerservice-IT@carefusion.com


International Headquarters
A-One Business Centre
Zone d'activités Vers-la-Piece 10
1180 Rolle
Switzerland
Tel: +41 21 556 3000

Manufacturers:

 CareFusion (Yorba Linda)
22705 Savi Ranch Pkwy
Yorba Linda, CA (USA) 92887

 CareFusion (Rolle)
A-One Business Centre
Zone d'activités Vers la Piece No 10
1180 Rolle, Switzerland

European Representative:

 CareFusion (Chateaubriant)
5 Rue Charles Lindberg
Chateaubriant
44110, France

Care Fusion pursues a policy of continued improvement in design, production and performance of its products. The right is therefore reserved to vary details at any time and without notice.

© 2009 Care Fusion or one of its subsidiaries.
All rights reserved
0000CF00021 Issue 1

